



Prime Minister of New Zealand 1928

The Man from Matakoho

- Gordon Coates

The name of Gordon Coates is synonymous with Matakoho, Otamatea and Kaipara districts. A resident of Matakoho, Councillor and Chairman of Otamatea County Council and Member of Parliament for the Kaipara electorate, and later Prime Minister of New Zealand, he was known and recognised wherever he went.

Born at the Coates family home *Ruatuna* in 1878, Gordon was educated at Matakoho School and then by private tutor. Unable to enlist for the Boer War, Gordon instead joined the Otamatea Mounted Rifles when the unit was formed in 1900. Due to the ill-health of their father, Gordon and his brother Rodney formed a farming partnership which endured for the remainder of their lives.

Around the same time, Gordon began his career in public affairs. By 1911 he was MP for Kaipara, a position held until his untimely death in 1943. Such was his popularity that fellow councillors would not accept his resignation as chairman of Otamatea County Council even when his parliamentary duties made it difficult for him to attend meetings. It was only accepted when he left for military duties in 1916.

DISTINGUISHED WAR SERVICE

Gordon left for WWI with the 19th Reinforcements with the rank of Captain. Posted to the Auckland Infantry Battalion, he served on the Western Front in France and Belgium. He was awarded the Military Cross twice for conspicuous bravery and arrived back in NZ in May 1919 with the rank of Major. An election was held the same year and Major Coates was soon elevated to the first of his cabinet posts; Minister of Justice, Minister in charge of the Public Trust and Postmaster-General. An account of Coates's political career from this point on proves the old saying, that "truth is stranger than fiction". Minister of Railways, Public Works, Native Affairs (Coates was fluent in the Maori language), Prime Minister, Leader of the Opposition, Deputy Prime Minister, Minister of Finance, backbencher and finally Minister for Armed Forces and War Co-ordination in WWII.



Joseph Gordon Coates - in the uniform of the 19th Reinforcements November 1916

POLITICAL INNOVATOR

Revered and idolised, hated and reviled but always respected for his courage and compassion and dedication to putting his country first, Gordon Coates was responsible for many things we now take for granted: hydroelectricity and the national grid, completion of the rail and road systems, the establishment of the first Maori Trust Boards, the Reserve Bank, to name a few.

Many measures he introduced have since disappeared: the Family Allowance, milk in schools (now being re-introduced), the quota system that guaranteed the entry of New Zealand's meat and dairy produce into Britain.

Although now largely forgotten, Gordon Coates was at the forefront of New Zealand's politics during the most formative years of the twentieth century. He was included in a list of 60 'makers of NZ' in the years 1930 to 1990.

Mary Stevens

KAURI MUSEUM EXHIBITION

2013 was the 70th anniversary of Gordon Coates's death. 2018 will be the 140th anniversary of his birth. These dates are separated by the centenary of the First World War in which he fought and in which his brother William was a casualty. To commemorate these anniversaries and to celebrate his life and achievements, The Kauri Museum is planning a major exhibition:

"The Man from Matakoho"

The extraordinary life of Joseph Gordon Coates
Military Cross & Bar, Privy Councillor, Member of Parliament,
Prime Minister of New Zealand 1925-1928.

The exhibition will be formally opened by the Governor-General on Friday 17 October.

INSIDE

- Museum farewells Bet Nelley 2
- Schools Speech Competition 3
- Medical Society News 5
- ORT - *Promise & Promiscuity* 6
- Spotlight on Jim Duffy 8
- Mangroves, Mud & The Kaipara ... 10
- Mainly Music in Paparoa 11
- Green Smoothie 12

Paparoa Press PP

PUBLISHED MONTHLY BY

Progressive Paparoa Inc. (PPI),
for Paparoa, Pahi, Matakohē,
Whakapirau and Tinopai.

CIRCULATION 1,000

CONTACT US

- paparoapress@orcon.net.nz
- ph 09 431 7144
- PPI, PO Box 107, Paparoa 0543
- www.paparoa.org.nz

ADVERTISING

Rate Card available by email
Booking & Copy deadline:

15th of month

Publication date 1st of month

Museum farewells Bet ...

In a career with The Kauri Museum spanning 20 years Bet Nelley of Whakapirau moved from her initial role as Collections Registrar all the way through to Chief Executive Officer. A farewell function was held at the museum in mid-May to acknowledge Bet's contribution and achievements over the years.

The role fulfilled by The Kauri Museum in the district is an important one - what benefits the museum benefits the community. Whether through visitors or local folk, the culture and history of the Kaipara District is maintained as a living example of how industry and settlement have played their part in shaping who we are today. Bet has played a huge role in supporting our community through this link.

We take this opportunity to say a very big thank you to Betty. We also welcome Lisa Tolich into the position and wish her every success.

(Watch this space for an in-depth feature on Bet in a later edition.) PP



Bet Nelley, CEO of The Kauri Museum

Bolt from the Blue - community responds

Recent public notifications of an application for a licence to open a liquor store in Paparoa's main street came as something of a bolt from the blue to local residents. The question was asked: Do we need it?

Those with whom we spoke expressed considerable dismay at the prospect and were overwhelmingly of the opinion that the locality is sufficiently well served by existing liquor outlets. While it is good to see new enterprise and demand for the empty shops it is the nature of the business that has concerned many. However some may take an opposing view.

Paparoa Press contacted Barbara Ware, KDC Community Engagement Manager, who gave us the following information on the state of play:

1. Submissions closed: 15th May.
2. 49 submissions were received, includes a petition with 454 signatures.
3. No submissions received in support – all were in opposition.
4. Applicant has been advised of the outcomes of the submission process.
5. We [KDC] are waiting to hear back from the applicant as to how they wish to proceed.

PP

Thanks ...

Thanks are due to young Charlotte Warburton who voluntarily assisted Keep Paparoa Beautiful members recently by sweeping up leaves on the Village Green and helped with planting the new garden in front of the public amenities block. Charlotte, a local girl in her first year at Ruawai College, is interested in her community and will be a great asset in the future.

Paparoa can do with more young people like her, so if YOU would like to assist contact J Booth 946 9990 or Graham Murray 431 6324.



Outcomes eagerly awaited ...

Following the community meeting between Paparoa & Matakohē residents and Kaipara District Council in April, council staff have been busy preparing a draft action plan. Once this has been approved by the Commissioners it will be released to the public.

KDC Community Planner Annie van der Plas said, "The action plan looks great and is filled with many positive solutions to the issues raised at the meeting".

The plan should be released in early June followed by working through with the communities on the implementation of its recommendations. Those who attended the meeting will be contacted in the first instance followed by general publicity. PP

DO YOU LIKE TO WRITE?

At Paparoa Press we rely on a number of independent contributors who provide regular (or occasional) pieces that make the Press the publication that it is.

For various reasons these contributors change from time to time and we are always seeking new input.

If you think you would like to try your hand at writing or have a topic you'd like to air why not contact us to discuss your thoughts?

All enquiry will be treated in confidence with no obligation.

Email paparoapress@orcon.net.nz or phone 431 7209. PP

LANDSCAPE SUPPLIES



Powell Contracting Ltd

OPEN:
Weekdays
8am to 5pm
Saturday
8am to noon

Diggers and Trucks for all your
Earthwork & Cartage requirements

Now Stocking

Daltons & Watkins:

- Potting Mix
- Compost
- Bagged Shell
- Pebble and Scoria
- Bark & Fertiliser



We Also Stock

- | | |
|---------------|-----------------------------|
| Bulk Compost | Timber |
| Topsoil | Posts |
| Sand | Battens |
| Riverstones | All grades of metal Nails & |
| Lime Chip | Staples |
| Blue Chip | Pro-max water tanks |
| Bark | Aqua water tanks |
| Post Peelings | Drain coil |
| Woodchip | Culverts |
| Builders Mix | Hurricane Gates |
| Cement | Full range of |
| Easi-crete | StrainRite fencing supplies |



Powell Contracting Ltd, 2088 Paparoa Valley Road, Paparoa
Ph/Fax 09 4316 331



Could I live without social media?
If children could rule the world, what would happen?
If I could go anywhere in New Zealand, where would I go & why?
Is New Zealand really a clean, green country?

Four excellent topics for years 5, 6, 7 and 8 students from six local schools to contemplate and compose a speech to present at the annual Paparoa Lions Club Speech Competition.



A stunning speech from each and every contestant this year made for a very memorable evening. Lions President Ken Chambers thanked the children and teachers for taking part.

Judge Warren Osbaldiston praised the children for having so ably and confidently accomplished this nerve-racking task; he invited any adult to stand on the dais and see a hundred faces looking up!

Judging had proved very difficult, with few points to separate

many of the speakers.

Senior prizes went to:

1st Ocean Shadbolt who spoke with real passion as to why she could not live without social media; 2nd Tegan Leaf and 3rd Zoe Quinn who both spoke on why they needed to use social media.

Junior prize winners were:

1st Renee Allen, who is very happy to have family camping holidays each summer on the coast along from Whakapirau; 2nd Andrew Birt with good

insight into what would happen if children ruled the world and 3rd Cullen Peele who would love to go again to Wellington where there is The Oval and the Sevens – no mention of the Beehive!

In closing, Paparoa School teacher Alison Cadman thanked the Lions Club for giving the students the opportunity to take part in this event. The delicious meal provided by the Otamatea Christian School parents was another highlight of the happy family evening.

Kevin's Shed
panel beating & repairs

Just ask

027 642 4991

09 431 6444



3245 Paparoa-Oakleigh Rd

Steakhouse

Ruawai Pizza Bar & Steakhouse

OPEN 6 days

Tuesday thru Sunday from 4pm

- Gourmet pizzas
- Steaks from \$20

Bookings preferred

09 439 2928

Mondays are available by pre-arranged booking

Crompton Engineering Ltd

Phone/fax 09 439 2393
31 Jellicoe Road, Ruawai



Hay Racks
- covered
or uncovered

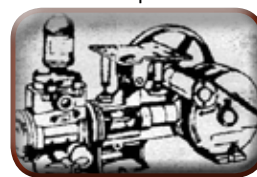
Palm Kernel
Trailers



website: cromptonengineering.co.nz
email: crompton.eng@xtra.co.nz

NEEDHAM PUMP SERVICES

For all Water Pump Supplies & Repairs



09 431 8235

Ross 027 669 4464

Daryl 027 271 1961

32 Whaka Street, Maungaturoto

The Glass Guy

Broken
Window
Repairs

Phone Colin
09 431 6595

www.paparoa.org.nz



Have your
organisation's
details
changed???

Please check out the Paparoa website - there's been some major updating thanks to Paul Edlin and Jane Bailey. If your group, organisation or business has some change of details can you please advise either Paul or Jane?

Paul is a computer whizz and has many ideas for the future development of the website. He says it's a bit hard to survive in the modern world without using this technology as it offers so many opportunities for Paparoa to connect with the outside world. The website can only reflect the information YOU'VE provided!

Contact Paul at ampac@ihug.co.nz or Jane on 431 6148.

REX BROWNE CONTRACTING

- Limestone & Metal Cartage
- Truck & Digger Hire
- Farm Roads
- Earthwork & Dams
- House Sites & driveways
- Wrapped Silage & Hay
- Cultivation
- Fencing & Mulching



**Maize
Silage
planting &
harvesting**

☎ 09 431 7556
☎ 021 720 590

Carpet Layer

20 years experience

phone Ian Ross

09 431 6939 a/h
027 4996 413



OUT & ABOUT around the District ...

Pest weeds were one of the concerns raised at the recent KDC Community Meeting so it's timely that Northland Regional Council is offering free Weed Workshops in Dargaville on Monday 16 June. Workshops are 9am-12noon or 1-4pm and cover hands-on pest weed identification and control methods. Numbers are limited to 30 per workshop so phone Sara Brill 0800 002 004 or email sarab@nrc.govt.nz

Paparoa Farmers' Market is very pleased to welcome back Don and Rosie of *Rosie's Vegetables*. They have an excellent range of really fresh produce sourced from their own gardens and Whangarei Growers Market. There's sure to be something to spark your interest. They have an interesting variety of Asian vegetables too.

Paparoa Primary School PTA's Quiz Night is on Saturday 28 June 6.30pm at the Sports Pavilion. This annual event is always lots of fun. See details page 13.

Fortunately no bereavements notified to PP this month but we

would love to hear of significant events in local families that we could recognise. Please email to paparoapress@orcon.net.nz

Book Reviews Wanted! Paparoa Press would love to receive your review of a Paparoa Library Book you've read and enjoyed. Please send to paparoapress@orcon.net.nz - it's great to have variety.

And still on books ... see details on page 9 on how to renew your Paparoa Library books online.

Congratulations to Frank Wu of The Paparoa Store on celebrating his 50th Birthday. Shengri kuaile! (Happy Birthday).

Otamatea Coast Guard would like to thank all those who donated to their collection at the Farmers' Market. They collected over \$300!

Safe Driving? With all the publicity around safe driving it seems some still just don't get it. Recently seen entering Franklin Rd from Paparoa Valley Rd - a mum delivering kids to School or Playcentre in her 4wd while talking on her phone. This

intersection is tricky at the best of times without the added distraction.

It's good to note some development work happening around the district. New driveways, new houses and subdivision. Does this mean a renewed confidence in the area after 5 years of recession?

Otamatea High School netball club has won an ANZ grant of \$5,000 by getting lots of votes online. These funds will go toward the cost of new uniforms and gear lost in a house fire earlier this year.

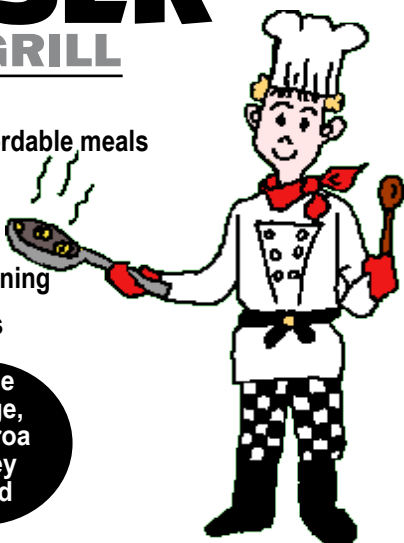
Tennis update - kid's coaching on Saturday and adults evening sessions have finished for the season. Friday afternoon sessions will continue from 1pm for social tennis. If interested please contact Sue Skelton 431 6224. A very big thank you to Sue from the committee and the families for running the children's tennis every week.

Please send your news to paparoapress@orcon.net.nz with *Out & About* in the subject line.

You won't go away hungry!

THE CRUISER BAR and GRILL

- Wholesome, affordable meals
- Fully licensed
- Family friendly
- Inside-outside dining
- Private functions



In the
village,
Paparoa
Valley
Road

OPEN WEDNESDAY to SUNDAY, 5pm 'TIL LATE

ph 09 431 6918

Strut your creativity at WAG14!



Enter another world - the world of wearable art, where nothing is normal and your imagination can be freed for all to see. If you have been thinking about a new project to do over winter and were thinking about something unusual, here's your chance to get creative and put your work on show.

We have categories to suit everyone:

- *Pacifica*
- *2114*
- *Absurdly Ridiculous*
- *Upcycled*

special categories of:

- *Funtastic Tails* for students aged 12 and under, and
- *Keep it in the Kaipara* hats for first time entrants

Artworks can cost little to no money to create and your efforts will be well rewarded. The major prize is two tickets for the WOW show in Wellington in September plus airfares and accommodation. This is very exciting and well worth striving for, plus there's a great variety of other worthwhile prizes in each category and section as well as Special Awards.

This year's show is shaping up to be more spectacular than ever with special lighting effects and a creative opening sequence.

More details on the categories and entry forms can be obtained from Skelton's Drapery or on line at www.paparoa.org.nz

Exciting News from Medical Society

Following on from the upgrade of its building which houses the doctor's clinic, the Paparoa Medical Society is very pleased to announce that a long term lease has been agreed with Coast to Coast Health Care for the whole of the building. Coast to Coast will use the additional space to redevelop the reception, consulting and treatment rooms to better cater for patients and staff. The facilities are cramped

and have become inadequate over the years.

Graham Taylor, Chair of the Medical Society said, "We welcome this real step forward for the community as not only does it show the commitment of Coast to Coast Health to Paparoa, it also allows for the provision of add-on services in the future. We will be working with Coast to Coast Health Care to encourage other health professionals to use the additional space. This

means that more services will be available locally."

We would welcome hearing from other health & social service providers who may be interested in occupying a room. Please contact Libby Jones on 431 6822. Currently the clinic is open Tuesday and Friday mornings from 8.30 to 12noon and is staffed by a doctor, nurse and receptionist. Appointments can be made by ringing 431 7222 or 431 8576.

REMEMBER!



Your
pets
need a
holiday
too

Rural Scene - Forestry Action

The buzz of chainsaws has filled the air as some local farmers have commenced harvesting their forestry blocks. Many farmers have small lots that have come to the peak of their productive life and with the log price being fairly good at present it's time to fell.

The logging contractors working the area are from Whangarei and use a 'shuffle' method of bringing the logs to the loading point. This involves diggers picking up and putting down the logs in a shuffle pattern until they reach an accessible place. By this time the trash has been largely removed and there is little debris.



Logging activity adjacent to Paparoa Stream

Some land will likely be returned to pines and some regressed. Surprisingly the stumps only take a few years to rot away.



The log grabber working behind debris piled on the edge of the stream bank

Paparoa's rural hinterland doesn't have many extensive forestry areas so the impact of logging trucks on our unsealed roads should not be as great as in some areas. Log harvesting is part of our rural scene and for the farmers involved a welcome financial return after years of waiting for the trees to grow.

FENCING CONTRACTOR

For all types of fencing, stockyards, handyman work, tree felling, tractor work etc.



phone

**Mike 09 431 6509
027 203 2694**

email

mandsplunkett@slingshot.co.nz

FARMWORK SERVICES LTD



**NORTHLANDS BIGGEST
BED OUTLET STORE**

- 1/2 PRICE BEDS
- SECONDS-SAMPLES
- SLAT BEDS
- PILLOWS
- TOPPERS
- ADJUSTABLE BEDS
- BEDROOM FURNITURE

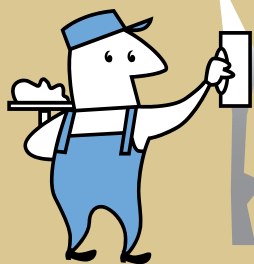


**STOP BY AT ELLE CEE'S AWARD
WINNING CAFÉ- WHEN YOU COME.**

(09) 439 2243
18 Freyberg Road, Ruawai

TINOPAI PLASTERERS

WE GUARANTEE THE HIGHEST QUALITY FINISH



35 Years experience in...

- GIB Stopping
- Fibrous Plastering

for FREE quote, call us now!
Trevor 021 0300 073

Oops ...

It's been brought to our attention that we reported some incorrect detail in our *Spotlight On Gary McMurray* piece in the April edition of Paparoa Press. We apologise to Gary for this and hope the following will clarify matters for readers.

NZ Paralympian Wheel Black, Gary (who now resides in Paparoa) was a member of the Wheel Blacks at the inaugural Paralympic wheelchair rugby tournament at the 1996 Summer Paralympics in Atlanta, where it was a demonstration event. Gary remained a part of the Wheel Blacks team for the next two Paralympics where the team won bronze in 2000 at the Sydney games, and the gold medal in 2004 in Athens.

It is also worthy of note that Gary won Auckland University's 'Most Meritorious' award for Sportsman of the Year in the mid '90s.

OTAMATEA REPERTORY THEATRE presents ...

Following the successful 'Theatrefest 2014' of four short plays, the business of staging 'The Wizard of Oz' has begun. Rehearsals are underway and show dates will be over three weekends from July 12-27.

For one night only, on Tuesday 3rd June, audiences will be treated to this year's "Arts on Tour NZ" play, a comedy with music – "Promise and Promiscuity".



Penny Ashton - Leading lady ... as well as ... the entire supporting cast!

Reviews have rated very highly for comedienne and actor

Penny Ashton's new, and first, play which was loosely inspired by Jane Austen's writing.

Penny presents delightful characterisations (all 9 of them) and her energy on stage gives a "lightning-paced and riotous parody, a lesson in human nature and societal snobbery" – if the title of the play sounds like something written by Jane Austen herself, then that's telling us something! For bookings see advertisement at right.

The Regional Finals of "Theatrefest 2014" will be hosted on August 22/23. ORT announced their pride in two more graduates from tertiary performing arts studies whose performing days began with them in Maungaturoto.

Congratulations to ORT. PP

Car Rallying in Kaipara

Contrary to plans for the 15 April International Car Rally to run on a small number of Kaipara Roads, the rally has been restricted to Whangarei District roads only. This will be a disappointment to those who enjoy watching top drivers negotiate the 'Hella' bridge on Swamp Road!

RALLYSPRINT ROAD CLOSURES: Very close to home, however, is the planned *Rallysprint* event on Sunday 15 June which will use the whole of Wearmouth and Franklin Roads to the Paparoa-Oakleigh Road. These roads will be closed from 9am to 6pm. Competition cars have to negotiate the road against the clock with St. John personnel in attendance, radio control from start to finish and tight control of racing. This event is being staged by the Hibiscus Coast Motorsport Club Inc. with the Paparoa Lions Club providing some marshals, the food caravan for the day and a meal before Prizegiving. The Paparoa Hall is used, as is the Showgrounds, so the event is welcomed as a fundraiser for our community.

SCHOOL PTA QUIZ NIGHT

How's your general knowledge? Are you good at trivia? Get your team of six together, get your thinking caps on, and see if you can take away the title.

This event is always lots of fun. It's to be held at the Paparoa Sports Pavilion at the showgrounds on Saturday 28th June.

For bookings or more details see advertisement on page 13.

Place your Ad here

reaching your community
for only \$25/month

all proceeds from advertising
go toward community projects

contact Paparoa Press

09 431 7144

paparoapress@orcon.net.nz



ARTS ON TOUR NZ PRESENTS

PROMISE AND PROMISCUITY

A NEW MUSICAL BY JANE AUSTEN
AND PENNY ASHTON



www.aotnz.co.nz

creative
ARTS COUNCIL OF NEW ZEALAND - TOI AOTEAROA

"PENNY ASHTON IS A DELIGHT TO BEHOLD."

Tuesday 3 June 7.30pm

Otamatea Repertory Theatre, Maungaturoto

\$30 Adult, Student/Gold card \$15

Book: www.ort.org.nz and door sales



COME ALONG ... TO THE TOY LIBRARY

Paparoa is very fortunate to have a veritable treasure-trove of colourful, sturdy, educational and developmental toys which can be accessed on a 'lending library' basis.

Play is the first step in a child's education and the library is an excellent way of providing toys appropriate to the changing needs of a child.

One of over 200 libraries within the Toy Library Federation of NZ, Hilery Poyner and her willing helpers have overseen the stocking of shelves and maintained the high standards of hygiene and condition of the toys. Funding has come from various sources, the latest being a well-supported Pub Quiz Night, proceeds from which provided 4 excellent ride-on

'farm' vehicles!



Enjoying the toys on offer are (left rear) Molly Clark, (left front) Harry Millar, and Annemiek Millar on the right

So, for a small family subscription each term and a fee of 50¢-\$2 each item loaned, a child can experience a huge range of toys. Come along to the Hook Road Community Church Hall on a Wednesday, 10.30am-1pm. The friendly 'unsung heroes' of the Toy Library will welcome you with open arms! And if you would like to be one of the willing helpers in maintaining this wonderful asset, phone Hilery Poyner on 431 7330.

Maungaturoto Rest Home In Residence:

Clyde Chapman..... of Whangarei District,
brother of Nicky Stutt (Pahi)
Audrey Couper..... Maungaturoto
Agnes Hill..... Jan Schimanski's mother
Grace Phillips..... of Auckland, has a son at Kaiwaka
Helen Simpson..... formerly of Kaiwaka
Doreen Smith..... formerly of Auckland and Don McKay's aunt
Ailsa Tee..... of Maungaturoto retirement village
Patricia Vaulkenburg... has a daughter at Oneriri
Ailsa Wood..... lots of connections in Maungaturoto

PP

Community Dinner

The Paparoa Sports & Recreation | Talent abounds in Paparoa.

committee held another successful community dinner in May for 60 people at the Sports Pavilion. The committee continues to fund-raise to upgrade the building and have recently held a scrap metal drive. They were keen to use the funds raised from the dinner towards the purchase of a commercial dishwasher.



Meshach & Miriam pictured with Greg Blythen

Thanks from the committee to everyone who helped with the dinner. \$700 was raised for the Solomon Islands relief fund.

However after the recent floods and earthquakes in the Solomon Islands it was decided their needs were greater than ours right now. Meshach Adomea, who is from the Solomon Islands, presented a slide show of the devastation caused by the flooding, and he and Miriam sang local songs in Solomon Pijin and the Solomon Islands national anthem.

Other entertainers added to an enjoyable night, Aaron Whaka performed an energetic dance from Papua New Guinea, and Greg Blythen played his guitar and sang sensationally.

Winter's coming. Are your tyres safe?

Why not come in so we can
check your tyres for you.
With our state-of-the-art wheel
alignment technology you can:

- Save money on tyres, petrol and steering joints.
- Improve your cars handling and safety.
- Reduce driver fatigue.

Garnetts Tyre Service

2 Gorge Rd, Maungaturoto. Ph 09 431 8255.

BRIDGESTONE TYRE CENTRE

Country Cutz

Gay Northcott
The Salon - Paparoa Village

Fully qualified
and professional
friendly service

- Ladies & Mens Cuts
- Perms, Colours & Highlights
- Weddings

Open Thurs-Fri
Wed & Sat by appt

After hours phone Gay 431 7007
Salon 431 7255

BATTENSBY Bros. CONTRACTING LTD

- Ground Cultivation • Silage and Hay
- Fertiliser Spreading • Fencing

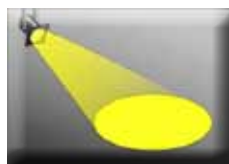


Glenn 021 983 734 Ross 021 983 594
Ph: 09 431 6186 Email: battensbybrothers@xtra.co.nz

katzkutz
quality haircuts and more!
with fair prices!

Also: foils, tints,
semi-permanents, crazy colours,
permanent waving, blow waves

Open Mon-Fri 9am to 5pm
(8pm Tuesdays)
**Call in or phone Katrina
on 09 431 9120**
Next to Well Kneaded Massage
Maungaturoto



Spotlight On ... Jim Duffy

"A typical kiwi No 8 wire type of bloke" is how Jim Duffy describes himself, and since purchasing a piece of land in Matakoho in 1999 it has been a very useful trait.



Jim with one of his 'ladies' - Lola

Born in Auckland, after leaving school at 15, Jim joined the Merchant Navy as a deckhand on ships carrying cargo around New Zealand and Australia. Although life at sea was enjoyable, he left after two years to seek some qualifications and became a heating engineer for some time.

His brief visits to Australia during his seafaring days had left an impression on him and, seeking adventure as young men do, he crossed 'the ditch' and worked for five years, eventually returning and marrying Sharon in New Zealand.

In 1987, the couple 'boom-eranged' back to Australia with three young sons in tow. But being true kiwis at heart it was inevitable that they would eventually return to New Zealand, though not before doing a circumnavigation of the 'big country' in a 1973 V8 Valiant Ranger towing an old caravan, taking five months "to do the job".

As the family grew a section was purchased in Mangawhai where they holidayed as often as possible in an old caravan. Like many fathers, having boys meant helping out with sports, so Jim did his bit by coaching rugby and has competed in the Masters Games several times in rowing, swimming and athletics.

When the 'empty nest' era arrived, they sought a more self sufficient lifestyle and though they still owned their section at Mangawhai, that wasn't where they wanted to retire. Sharon has hereditary ties to the Kaipara area as far back as the Albertlanders. Her great grandmother Ada Gilpin was a Postmistress at the Paparoa Post Office from 1914-1922, hence their interest in the Paparoa and Matakoho area.

With the help of a builder friend, Jim began to build a new home and an exciting new lifestyle began. Soon they had an almost self sufficient way of life. They integrated easily

into the Matakoho and Paparoa communities and being great lovers of Country & Western music were foundation members of the *Music Makers* group, and are now the main organisers. They also belong to the popular local group of musicians *Eccentric Ukes*, who perform to raise money for charity.

When Jim entered the inaugural Paparoa Wearable Arts Gala and Trash-to-Art competitions, his inventiveness came to the fore and he won several awards, his entries showing his keen sense of humour and love of fun.

In retirement Sharon is no longer the only woman in Jim's life – he has a 'harem' of retro caravans who all have female names, and these keep him busy as he endeavours to restore them to their former glory. PP

Ross Murphy Plumber

CERTIFYING
PLUMBER

NEW HOUSING
RENOVATIONS
MAINTENANCE

09 431 7510
021 424 252



g.a.s. Paparoa

Safety
First

- Petrol, Diesel & Oil
- **LOWEST** priced milk
- Great variety of Bait



Local tides for June 2014

JUNE TIDES - CALCULATED for PAHI-WHAKAPIRAU					
DATE	LOW	HIGH	DATE	LOW	HIGH
1st	7.14pm	1.19pm	17th	7.53am	2.20pm
2nd	7.52pm	1.50pm	18th	8.47am	3.15pm
3rd	8.23am	2.42pm	19th	9.43am	4.12pm
4th	9.08am	3.28pm	20th	10.41am	5.13pm
5th	9.57am	4.19pm	21st	11.43am	6.18pm
6th	10.49am	5.14pm	22nd	12.46pm	7.24pm
7th	11.43am	6.12pm	23rd	1.47pm	8.26pm
8th	12.39pm	7.11pm	24th	2.43pm	8.42am
9th	1.34pm	8.07pm	25th	3.33pm	9.33am
10th	2.27pm	8.26am	26th	4.18pm	10.20am
11th	3.18pm	9.16am	27th	4.59pm	11.02am
12th	4.07pm	10.06am	28th	5.37pm	11.42am
13th	4.55pm	10.55am	29th	6.13pm	12.19pm
14th	5.33pm	11.45am	30th	6.49pm	12.56pm
15th	6.31pm	12.36pm			
16th	7.11pm	1.27pm			

John & Nicki Eddy
09 431-6302

Mon-Fri 6.30am-6.30pm
Sat 7am-6pm; Sun 7.30am-5.30pm



Motoring Matters

How can a new Bentley be 'a load of bull'?

Well quite easily actually. The 350 pieces of leather which make up a large part of the interior of a Bentley *Mulsanne* require the hides of no less than 14 bulls, all from one area of Switzerland. Actually it is 14 half hides as very rarely is more than fifty percent of the hide used because of imperfections.

Cow hides are not used as they will have stretched during pregnancy.

Add to the hides the veneer wood from a single tree to make sure every piece matches and you have an expensive car that seems to be very unfriendly to the environment.

Talking of the environment, modern diesel engines are supposedly much cleaner, they have much lower CO₂ emissions than petrol engines. Only problem is that making diesel engines more efficient than petrol engines also produces some particularly nasty particles which attack the human respiratory system!



Graham Roberts

In The Kaipara Garden ...

There is definitely a chill in the air in the dark early mornings now, so winter is on its way, although the sun is still lovely and warm during the day and the tomatoes and capsicums are still producing, but probably not for much longer. The cabbages and caulis are growing well – now most of the white butterflies have left.

But, this is the time of year to start planning and dreaming up ideas for next year's garden. A lovely gardening catalogue, a cup of coffee and a comfy chair – with pen in hand to mark the plants that take our eye, is the way to go when you have time. My lawn is definitely going to shrink a little more next spring as the easy care section area is now mostly covered with shrubs and trees that do not require too much care and I can pay more attention to the raised beds near the house.

The plan is to prepare the soil soon with layers of organic material and manure and let it break down over the winter ready for spring planting. I will use some of the compost from my very active worm farm and mix it with the soil and manure. Hopefully this will give my spring plantings a head start later.

For now I am going to make up a planting schedule so I plant the seeds in time – put the potatoes out to sprout etc. at the right times and don't forget!!

Stella Clyde

**Does your
organisation have
something interesting
to tell the community?**

**We'll be happy to place
your news
space permitting**

**contact Paparoa Press
email preferred
paparoapress@orcon.net.nz
09 431 7144**

The Old Post Office Guest House Bed & Breakfast

Deb & Kevin 09 431 6444
www.oldpostofficeguesthouse.co.nz

*For a
warm
welcome*

- SMALL GROUPS OR LARGE
- MEALS ON REQUEST



Serving the community since 1903

Paparoa Community Library update

MEMBERSHIP IS FREE. OPENING HOURS ARE:

Monday 1.30-4pm
Wednesday 10am-12noon
Thursday 1.30-4pm
Friday 9.30am-1pm
Saturday 9.30am-1pm Fortnightly on Farmer's Market days



The library is run by a dedicated team of local volunteers.

There's a great selection of both fiction and non-fiction books and an extensive selection in large print. Books are exchanged 6-monthly with larger public libraries in the Kaipara District so that a constant supply of new material is always available. Books can also be sourced by special request (free from Kaipara libraries, a small courier fee for elsewhere).

A good range of Audio books is available and updated every 3-6 months.

The Children's library has new books purchased regularly.

The Reference Library also comprises a good selection of local history - for use at the library but are not lent out. There's a good selection of jigsaws and an extensive range of magazines is also freely available.

TO RENEW YOUR BOOKS ON-LINE:

- go to www.kaipara.govt.nz
- click on *Services and Info, Library, Login*
- Enter the barcode from your Library card (numerics only) and Pin number (you need to have registered this at the Library)
- Click *Here* to renew items
- Tick *Renew* box at right
- Click on *Renew* button bottom left

You can renew books online once for a further 3 weeks. For further renewals you need to go to the Library.

You can also view online your borrowing history, which goes back for two years.

SKELTON'S

**The Cold Weather
has arrived!!**

**and so has the Knitting season,
we have a great selection of
Knitting patterns and Wool!!
get those needles clicking.**



**New stock of the
Ebony Jean has arrived
Black & Blue, a great fit!**

Skelton's Paparoa Drapery

Mon-Fri 8.30am to 5pm Sat 9am to noon

Ph 431 7306

**List today and take advantage of
our New affordable rate - 2.95%
Call me now.**

Leanne Walker

Licensee Salesperson

021 431 619 a/h 09 431 6199

leanne.walker@raywhite.com

Bogue Real Estate Ltd

Licensed (REAA 2008) 09 425 1654
rwwarkworth.co.nz



Ray White

MANGROVES, MUD & THE KAIPARA (Part 3)

Exotic events – separated in both time and space – have colluded to influence the widespread deposition of mud in the Kaipara Harbour. The landscapes of Northland and Auckland tell a story of geological and climatic events of the past. Geological history, recorded in rocks and fossils, has chapters that to some people (not geologists) contain scarcely believable dimensions – billions of years of geological time, multi-kilometre thickness of sedimentary rocks, vertical and horizontal movement of crustal and oceanic plates across vast distances, and a record of the evolution, dispersal and episodic mass extinctions of many plant and animal groups.

The oldest (basement) rocks of the Kaipara catchment – “greywacke” sandstones and altered volcanics formed nearly 300 million years ago – are now mostly covered by much younger sedimentary and volcanic units, and crop out only in the east near Whangarei. The most distinctive of these cover rocks is called the Northland Allochthon (name derived from Greek *allo* [different or other] and *chthon* [earth]), formed during one of the most intriguing events in New Zealand geological history. Beginning about 25 million years ago, over a period of 3 to 4 million years, great slabs of seafloor volcanic rocks and overlying sediments up to 4 km thick, were heaved by tectonic forces from the South Fiji Basin and thrust and slid as much as 200 km southwest to form a new land mass from North Cape to Auckland. Sedimentary

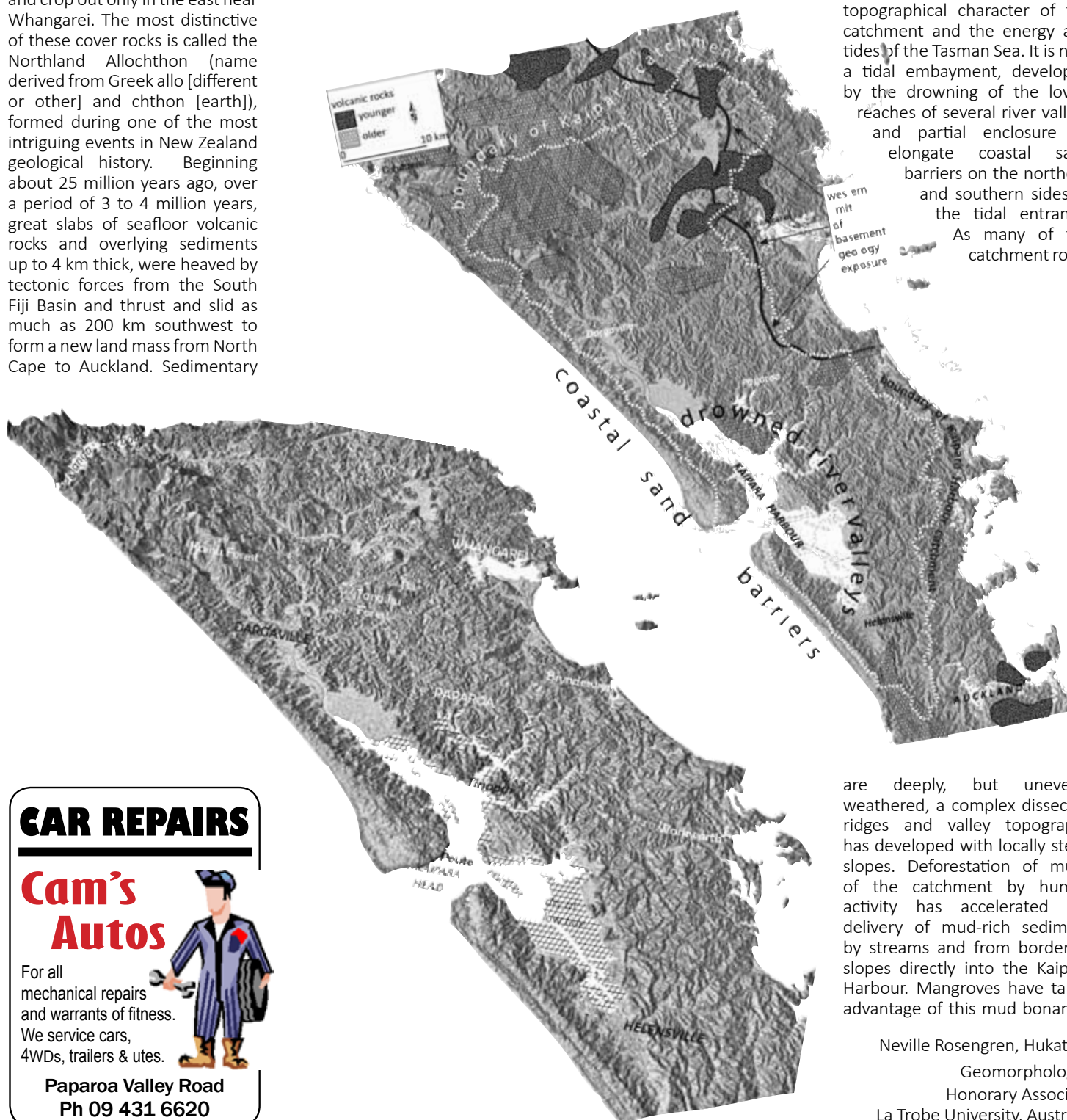
beds including limestone and mud-rich rocks were then deposited over part of the allochthon and several episodes of igneous activity produced numerous steep-sided plugs, such as between Tokatoka and

Dargaville, and extensive surface basalt lava flows west and north of Whangarei.

The most recent imprint on the Kaipara landscape – and one that has introduced change

more rapidly and widespread than some earlier processes – is successive waves of human predation.

The form and dynamics of the Kaipara Harbour is determined by the geological and topographical character of the catchment and the energy and tides of the Tasman Sea. It is now a tidal embayment, developed by the drowning of the lower reaches of several river valleys and partial enclosure by elongate coastal sand barriers on the northern and southern sides of the tidal entrance. As many of the catchment rocks



are deeply, but unevenly weathered, a complex dissected ridges and valley topography has developed with locally steep slopes. Deforestation of much of the catchment by human activity has accelerated the delivery of mud-rich sediment by streams and from bordering slopes directly into the Kaipara Harbour. Mangroves have taken advantage of this mud bonanza!

Neville Rosengren, Hukatere
Geomorphologist
Honorary Associate
La Trobe University, Australia

CAR REPAIRS

**Cam's
Autos**

For all
mechanical repairs
and warrants of fitness.
We service cars,
4WDs, trailers & utes.



Paparoa Valley Road
Ph 09 431 6620

Pets in the Valley

I recently enjoyed doing an online course on Small Animal Dentistry. Unfortunately I developed a severe case of x-ray envy as many of the case studies had beautiful images to go with them which help make the decisions on what to do with individual teeth easy as you can see whether the tooth root is damaged or not. This is what happens to us when we go to the dentist and a lovely dental x-ray machine swings down beside your cheek and takes the picture while you bite on the x-ray film. Really easy to do with the right equipment but not so easy without. Anyway I was really keen to start doing some imaging so using the number 8 wire philosophy we ordered some little dental x-ray films and waited for a suitable patient ...

Now there are a great many things you have to get right to get a diagnostic x-ray image: correct focal distance (space between machine and film), correct intensity of the x-ray produced (too little and the image is too pale - too much and it's too dark), duration of x-ray, correct angle between x-ray beam and x-ray film (so you actually see the tooth roots not just the crowns), correct developing time in the chemicals, patient immobility etc etc. Only one thing needs to be wrong to make the image produced less than useful.

So the day arrives. I have a dog anaesthetised on the table, we wheel in our non dental x-ray machine, randomly set up some distances and factors, get the angles as best we can and take our first shot of the lower incisors. I expect it will take several shots over several animals to start getting what we want, if I can even see some teeth on the first x-ray I will be happy.

So what happened? Our first dental x-ray was perfect! Looking forward to many more.

Take care, Janine



Paparoa Press PP CLASSIFIED ADVERTISING

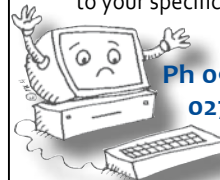
Temporary Fence Panels

Long/short term hire
Great for building sites,
events & waterways
ph Jimmy 021 932 132
09 431 6030

CLASSIFIED:
Single header line
plus two lines of text \$5

R & D MACDONALD COMPUTERS

Call Ross with your
computer problems & repairs
He'll even build a computer
to your specifications



Ph 09 431 6221
027 932 8114

email: ross@paradisebreeders.co.nz

Mainly Music in Paparoa



For many years *Mainly Music* has held sessions on Wednesdays, 9.30-10am in the Hook Road Community Church hall. This fun music group is free and run by volunteers Julia Parker & Rebecca Borger who've been involved since the group started up.

Each session goes through a variety of music and actions which children and adults get involved in. Through their shared enjoyment the children learn skills in language, imagination, movement, listening & following instructions. Julia tries to bring

out the best in each child and help them with numeracy and literacy skills, with developing gross and fine motor skills and much more. Importantly, it's also a place where parents can socialise in a supportive atmosphere. The session is followed by morning tea for adults and children – a relaxed and happy place to be for a short while.

Julia and Rebecca would like to welcome more families to come along and experience the music, the fun and the laughter of young children exercising to music!

Keith the TV Guy

Freeview digital TV transmission is here



16 TV and
9 Radio/Music
channels are
currently being
transmitted.

Satellite dishes,
decoders, cable
etc., supplied
and installed.

09 431 7143
or 021 239 4251

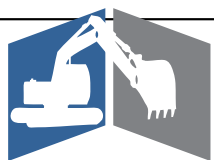
Paparoa Motor Camp



check out
our
self-contained
cottages

● Tent and Van sites, Cabins, Kitchen,
Showers ● Internet available ●
Public Laundry facilities ● Pump-out Station

Ph 09 431 6515
cnr SH12 and Pahi Road, Paparoa



HUBAND
CONTRACTORS LTD

**ROADING • EARTHWORKS
DRAINAGE • SITEWORKS**

For enquiries, contact Shaun:

Cell: 021 222 0272

Home: 09 431 8339

Email: admin@huband.co.nz

Registered Drainlayers

THE GREEN DRINK: WHAT IT CAN ADD TO YOUR LIFE

If there was a pill that, taken daily on an ongoing basis, could increase overall energy, promote restful sleep, increase clarity and concentration, improve skin tone, produce a healthful glow, elevate overall mood, had no adverse side-effects, tasted pretty good, worked for everybody AND was relatively cheap and accessible, would you take it?

It's a safe bet that most people would. I'm not aware of any such pill but I do have a recipe that has given me the results described above. Here it is:

GREEN SMOOTHIE:

Two big handfuls of leafy greens (not silverbeet) – usually spinach but you can add kale, lettuce and anything else that is

'green'; preferably young leaves. I also add wheat/barley grass (easily sprouted at home – refer YouTube). Add one handful of fresh mint (provides a refreshing 'kick' to the taste). Place the lot into a blender and just cover with apple or apple/feijoa juice – the REAL stuff, not the supermarket shelf variety. I get mine from Whangarei farmers' market (2L bottles around \$5 each). Blend up really well.

Optional additions:

1 tsp organic coconut oil. Half an avocado which adds a smooth, velvety texture to the drink. A little protein powder. Spirulina. A couple of pitted dates for added sweetness.

Store left-over smoothie in a glass jar in the fridge and it will be fine

for the next day. Do not store any longer than 24 hours due to rapid depletion of vitamins and minerals. Shake it up and drink again next day.

You will notice the difference within a week – you may even develop a bit of a detox headache. Bonus: If you get into the habit of having a glass of liquid green every morning, you won't feel as hungry (it's also a meal replacement).

I'm also an advocate of fresh vegetable juices, alternating these with the smoothies. Check out 'Fat, Sick and Nearly Dead' (Joe Cross) on YouTube. It's incredibly motivational.

If you've got any questions/comments, please email me: marianne@ubernet.co.nz

art Sculpting with Oamaru Stone



I have finally tackled my large block of Oamaru stone. Moving it is no longer a problem, because I started by sawing it in half. I prefer building works up from component parts rather than carving, and I am combining the Oamaru stone with macrocarpa, glazed ceramic and painted wood.

Oamaru stone is a soft limestone that comes from Weston, near Oamaru. The stone quarry is an amazing place to visit. The pits are vast; with tall straight walls marked with rectangles, resembling skyscrapers turned inside out. Rails are laid onto the flat surface of the stone, and a small train engine with a chainsaw-like blade pointing straight down cuts its way across. The rails are re-laid for each cut, then the huge blocks are sliced through underneath and lifted off. Most become building blocks, but the quarry people are very supportive of sculptors and gave me all the stone I needed when I lived nearby. In return I gave them photos of my work for their gallery wall.

Oamaru stone is easy to work using wood saws and chisels, but is very abrasive and blunts the tools horribly. Consisting of compacted layers of seashells, the limestone has a grain and should be used horizontally. It may contain interesting inclusions – layers of volcanic ash and even some fossils.

Unfortunately the freight costs to Northland are considerable so I've not used it much since I came here, but sometimes there are pieces available through the Craft Quarry in Whangarei.

Helen Budd

*I read recipes the same way I read science fiction.
I get to the end and I think "Well, that's not going to happen."*

Matakohe House



**Licensed Café
and
Bed & Breakfast
Accommodation**

CAFÉ: Open every day for Lunch,
Morning & Afternoon Teas, and Dinners

Check out some Matakohe House specialties:

MUSSELL & KUMARA FRITTERS (to die for)

NACHOS (spicy beef with sour cream)

'A LA CARTE' Dinner Menu

all our food is home cooked

Bookings are absolutely essential for dinners

WE CATER FOR ALL CELEBRATIONS - GIVE US A CALL
Matakohe House, 24 Church Road, Matakohe 09 431 7091

Ruawai Homekills

Full service slaughtering & processing of Beef, Sheep, Pigs, Deer, Goats

All Beef aged

Salami ▲ Bacon ▲ Ham ▲ Sausages

Hamburger Patties

Traditional Manuka wood smoked Bacon, Ham & Salami

Over 25 years experience

For prompt & professional service contact Wayne or Annette

09 439 2020 • 021 401 934

ruawaihomekills@gmail.com
Information packs available

Covering the Kaipara and Whangarei regions

KAIPARA LIFE

Thank you Christine ...

Our valued contributor Christine Yardley has provided this lovely image of a typical Kaipara bach.

Christine 'bows out' of her regular *Kaipara Life* feature in the Paparoa Press.

We convey heartfelt thanks to Christine for her writings for us over the past 2½ years.

If there's anyone out there who feels they might like to help us fill this gap - please phone 431 7144, or email paparoapress@orcon.net.nz



PAINTER

Dave Stephenson

- Interior
- Exterior
- Roofs
- Mould spraying
- Waterblasting

No job too small

09 431 6623
027 490 3522

How to look good in front of the camera ... pt. 4



This month I will be talking about hands and how they can make or break a portrait. We all have them but what do you do with them when you are having your photo taken?

We use them every day, they help us do everything we need; but it's not until you have a camera turned on you that you become overly aware of them. Hands tell us a lot through body language, they show our feelings, actions and even relationships without us realising what we're 'saying'. When we look at a photograph, we are reading many things subconsciously and almost instantly; ever seen a photo and felt the love or conversely the anger, but not sure why you felt this?

Our gaze is drawn first to a person's hands and then their eyes: it's interesting to note that we have evolved to look at what someone is doing before we look to see who they are or if we recognise them. But with this knowledge, we can use our hands to show people what we want them to know about us.

Ok, so now we know why hands are important in photos but what do we do with them?

Well to start, keep them relaxed,

unless you want to look angry, scared or stressed; avoid making fists with your hands, or bending your fingers into a claw-like shape or having dead straight fingers (which are very marionette/puppet-like). To stop us doing any of these, it's best to give your hands something to do; either hands in pant pockets or belt loops, hold your forearms (a loose crossed arms action), hold the hand of a loved one or put an arm around their shoulder. Connecting with someone by holding hands or linking arms shows comfort and closeness in the relationship or friendship. And don't be afraid of getting close, photos always make you look further apart than in real life, so snuggle up.

Next month will be the last in this series and I will be going into the most important part of looking good in front of the camera - having an award-winning smile. So stay tuned, practise posing with relaxed hands and I'll see you next month.

Sarahlee Cobb



Success through effort

PAPAROA PRIMARY SCHOOL PTA ANNUAL QUIZ NIGHT

Saturday 28th June 2014

6.30pm doors open - 7pm prompt start

Paparoa Sports & Recreation Pavilion (showgrounds)

\$15 per person
Max 6 people per team
Limited Tables so be in quick
Exciting Auctions
Food
Proudly Alcohol Free
A LOT OF FUN TO BE HAD BY ALL!

Bookings available at the school office or you can pre-book teams on our website www.paparoa.school.nz



Paparoa Store

Proudly Supporting Paparoa

OPEN 7 DAYS

Monday-Saturday 7am-6pm

Sunday 9am-5pm



We stock a great selection of

CONFECTIONERY, ORGANIC, DELI, MEAT, FRUIT, VEGES, FROZEN GOODS, BEER, WINE and a wide range of grocery items at excellent prices

DVD's \$1 to \$8 per night

EFTPOS NZ HERALD POST CENTRE

Phone / Fax 431-7320

Cnr. Franklin Road and State Highway 12



What's Hot

New tar seal on the Village Green carpark - thanks KDC

What's Not



Woman seen using The Landing to relieve herself - Yuck

Real Estate Report



It's been a good year for real estate sales. Over recent months sections and lower end bare blocks have been selling. Properties which had been on the market for a substantial time have sold. Enquiry is steady mainly from the Auckland area. Property prices remain stable.

First National Real Estate, Region One held their annual regional awards in March.

Sheila Boon was awarded Top Sales Consultant – Sections & Project Marketing. Rhoda Morrison was awarded Top Rural Sales Consultant and the Maungaturoto Office received the award for Top Rural Sales Office.

Sheila Boon
Licensed Agent REAA 2008
for Dargaville Realty Limited
T/A Roper and Jones

KAIPARA YOGA

KAIPARA YOGA with Jenny Gilbert-Longdon is being found to be both beneficial and enjoyable by the use of simple exercises to improve posture, strengthen the core and lengthen the spine. Jenny is adamant that the Yoga she teaches is of a restorative



nature with emphasis on good breathing. She says "Everybody is able to do it to their own ability, it is definitely not too difficult or strenuous". If you're looking to improve your ability to move easily and feel more healthy, this is a class to try. Jenny wants to offer a class to suit all needs. The

early class is 8.30am and the latest one 5.30pm. Phone Jenny with enquiries 021 114 3370 or 280 9694, email longberd@gmail.com, or Facebook Kaipara Yoga.

YOGA Term 2 timetable:

PAPAROA SPORTS PAVILION: Mon & Wed 8.30-10am; Thur 5.30-7pm

MATAKOHE HALL: Mon 11.30-1pm; Wed 4-5.30pm

MAUNGATUROTO CENTENNIAL HALL: Tue 4.30-6pm; Thu 11am-12.30pm

Northtec Community Education is subsidising these classes in a big way- for 10 classes the cost is \$35 and there is a 'casual' cost of \$10.

Letters from the Old Post Office



Diana & the Golden Apples

Walking the dog and throwing pine cones I often think about Diana and the golden apples (as you do). Anyway, as I stoop to gather a pine cone, throw it for the dog, then stoop again to pick up the one she has just spat out, I start to feel slowed down. (Forget

being in the moment, I want to be in the next one)!

Diana, as the story went, was a fabulous girl, fast and swift and beautiful. The blokes couldn't catch her, so couldn't marry her. Finally, an aspiring suitor was given advice, throw a series of golden apples and Diana, in stooping to pick them up would lose pace. As she was burdened with the extra weight he would be able to beat her.

Weighing up this story I am still befuddled and bemused. What does this story tell us exactly? The bloke couldn't win the lady fairly? That she was not that bright? That she was greedy? That you have to burden the woman in order to out do her?

I still haven't come up with a convincing theory, but as you can understand it has been bothering me. Although in no way young and fast, or beautiful, (although hopefully not too stupid) I am still conscious of the dog's ability

to slow me down. Again, is this actually a good thing and I should just accept it? Or ...

As a footnote, my recent research suggests that it wasn't Diana and the golden apples at all, but Atalanta and the golden apples. Apparently, many suitors had failed to win her, so young aspiring Hippomenes prayed to Venus (Goddess of love and beauty) for help. The apple idea was hers and all Hippy had to do was to sacrifice something or other to Venus when he had won Atalanta. Naturally, in the excitement of the moment he forgot and there was trouble. I think they both got turned into lions and had to stay that way. Not too bad a punishment as they went then. But, possibly something to remember when you fail to suitably recompense a powerful person for their assistance.

Deb C



TAKEAWAY MENU

BURGERS

Cheese.....	\$7.50
Prime Angus Beef....	\$7
Chicken.....	\$6
Vegie.....	\$6
Fish.....	\$6
Bacon & Egg.....	\$7

PIZZAS

BBQ Chicken	Ham & Pineapple
Meatlovers	Hearty Local
Seafood	Vegetarian
Supreme	Cajun Chicken

Small \$15 Large \$20 Available every day

EVERYTHING ELSE

Battered Fish.....	\$3.50	Battered Mussel.....	\$1.50
Hotdog on a stick.....	\$2	Potato Fritter.....	\$1.50
Chips min.....	\$2.50	Sausages.....	\$2
Mussel Fritters.....	\$4	Wedges.....	\$6
Curry Roll.....	\$2.50	American Hotdog.....	\$4.50
Spring Roll.....	\$2.50	Battered Sausage.....	\$2.50
Battered Oyster.....	\$1.50	6 Chicken Nuggets.....	\$3.50
Battered Scallop.....	\$1.50		

HOURS: Wed, Thur, Fri 4pm till late / Sat & Sun 8.30am till late

09 431 7359



Rhoda Morrison

Your Full Time Local Real Estate Agent

Top Rural Salesperson
last 4 years Region 1

Listing to sell NOW

09-431 6912
0274 800 691

rhodamorrison@xtra.co.nz
www.ropelandjones.co.nz



first
national
REAL ESTATE | Roper & Jones

Dargaville Realty Ltd
Licensed REAA 2008

WHAT'S ON - JUNE 2014

Anglican Church St Marks 1st, 2nd & 4th Sundays 10am, Hook Road, Paparoa
Ararua Church 10.30am every Sunday, All welcome ph 431 6622
Art Group Paparoa 1st Sun in month, Helen Budd's Studio, ph 431 6192
Art Studio, Ruawai Mon 10-12noon; Tue 7-9pm, ph Frances 439 2554
Arty Farties • Summer Markets 9am-noon, opposite Village Green
 • Thur/Fri in the 'Tile Shed' ph Anne on 431 6229 to enquire
 • Crafty Kids Club alt Saturdays 10-2pm, Rm 5 Paparoa Primary School
 • Beginners Patchwork Group, Mon 7pm, Te Pahi River Drive
Badminton Thurs, years 5-11, 5.30pm; older/experienced 7pm, Paparoa Hall
Crafternoons 1st & 3rd Wed in month, 1-4pm, Tinopai Hall ph Lyn 431 6090
Exercise to Music Tue 10.30am Paparoa Hall \$5 ph Rose 431 7418
Farmers' Market Fortnightly Sat 9-noon, Village Green Jun 14, 28; Jly 12, 26
Fire Force 1st & 3rd Monday in month 6.30pm Depot Rd ph Cohan 431 6668
Gardening Club 2nd Wed of month, ph Lea 431 6296
Grey Power Last Wed in month, 2pm, Hall next to Resthome, M'gto
Indoor Bowls Paparoa Hall ph Loraine 431 7290 or Robyn 431 7306
Kaiwaka Movies 6 Jun *Gravity* 7.30pm; 8 Jun *Walking with Dinosaurs* 2pm;
 20 Jun *The Book Thief* 7.30pm; 4 Jly *The Wolf of Wall St* 7.30pm
Library Mon 1.30-4.30pm, Wed 10am-12noon, Thu 1.30-4.30pm, Fri 9.30am-1pm
 open all Farmer's Market days - alternate Saturdays 9.30-1pm
Line Dancing Thurs 10.30am Paparoa Hall ph Rose 431 7418
Mainly Music Wed 9.30am Paparoa Comm Church, ph Rebecca 431 7550
Music Makers 2nd Tues of month 7.30pm @ Cruiser Bar & Grill
Northtec Horticulture Thurs, Community Church, Hook Rd, ph 021 0230 6465
ORT Promise & Promiscuity One night only - Tues 3rd June, www.ort.org.nz
Otamatea Quilters 1st Tue/mnth 7pm & 3rd Mon 10am, Paparoa Hall 09 439 2262
Paparoa Community Church 10.30am every Sunday, Hook Road
Paparoa Hall - Functions venue ph Robyn 431 7306 or a/h Loraine 431 7290
Paparoa Lions Dinner Meetings 3rd Mon in month 6.30pm, Sports Pavilion
Paparoa Playcentre Tue & Fri 9.30-12noon Visitors welcome ph Tina 021 033 5128
Paparoa Plunket Society Coffee Group 1st Tue/month, 10am Franklin Rd
Paparoa Primary School Term 2 May 5-Jly 4; Term 3 Jly 21-Sep 26;
 Term 4 Oct 13-Dec 11
Paparoa Toy Library Wed 10.30-1pm, Paparoa Comm Church, Hilery 431 7330
RallySprint Sun 15 Jun, see ROAD CLOSURES & further details - page 6
Rugby - JMB 4-14 years, Thur 4.30pm Paparoa Showgrounds ph 431 7028
School PTA Quiz Night Sat 28 Jun - see details - advertisement page 13
Selwyn Centre Thurs 10am for over 65's, St Marks, Hook Rd, ph 431 8193
Sports Pavilion - Functions venue, ph Vickie Owens 431 6432 for bookings
St Mary's Catholic Church 10am Wed, 6pm Sat, Maungaturoto
Tai Chi Tues 11am, Sports Pavilion, Showgrounds ph Shirley 431 6408
Table Tennis Tues 7.30pm, Sports Pavilion \$2 Pete 431 6822
Tennis Courts open all winter, no set sessions. Non members \$2. Ph Sue 431 6224
Ukelele Players Beginners / experts, Thur 4pm Matakoho, ph Dennise 431 7012
Waka Ama Tues & Thur evenings 5pm, Sunday 10am, Pahi Domain
Weed Workshop Mon 16 Jun - ph 0800 002 004 (see Out & About - page 4)
Yoga Paparoa Sports Pavilion Mon & Wed 8.30am, Thur 5.30pm, ph 09 280 9694
 PLEASE UPDATE US WITH YOUR DETAILS: paparoapress@orcon.net.nz PP

Paparoa & Matakoho
Community
Response Plans

In 2012, a Response Group was set up and the Plan 'signed off' by the Paparoa Volunteer Fire Force and key people in the village working with Trevor Andrews, Northland Civil Defence Emergency Management Officer, Kaipara District Council. The Matakoho Group is in the process of compiling their Plan.

A Review and update of the Plan will be held at a meeting on 16th June at 6.30pm in the Paparoa War Memorial Hall and it would be a good idea for anyone who is interested to come along to find out how the Plan would work in an emergency of any kind.

Our area could possibly face a major flood, land slip, cyclone, fire, tsunami, earthquake, or civil disturbance. As Northland has a dedicated Emergency Management team working out of Whangarei, we are benefitting from their experience and knowledge, and can feel reassured that in an emergency, many agencies would be in place to help us, although initially of course we are on our own.

The Paparoa Plan is for three Welfare Centres in the Village which could be set up and people allocated to operate each of them, plus a list of local resources compiled from medical to door knocking to emergency equipment. The Fire Force is trained in instigating these services and keeping in touch with the Northland Group. PP

"Resilient Communities Together"

HOME HEATING
INSTALLER

Flue sweeps
Repairs
Installations

Ken Subritzky

from
Dargaville to Wellsford

09 431 7477

021 121 4879

kensub548@gmail.com

FRESH & FROZEN
Oysters, Mussels,
Fish & Kina

10am - 5.30pm
1994 Paparoa Valley Rd
09 431 6089

HOOK, LINE
& SINKER

There's still a few large snapper being caught in the Kaipara if you know where to go, also the kahawai are around again, and some nice sized gurnard are being caught. There haven't been many boats out fishing for the last week or so. Some nice sized snapper were caught from a kayak out from Pahi Beach motor camp at the weekend.

Gravy

Community Directory

EMERGENCY: FIRE ■ POLICE ■ AMBULANCE dial 111

COAST TO COAST HEALTH CARE

Maungaturoto Medical Centre: 8am-5pm Mon-Fri 09 431 8576
 Paparoa Clinic: Doctor Tue + Fri 8.30am-12.30pm..... 09 431 7222
 For urgent after hours medical service (Wellsford)..... 09 423 8086
DISTRICT NURSE Dargaville Hospital 09 439 3330
 Healthline - 24 hour service..... 0800 611 116
HOSPICE KAIPARA Dargaville Hospital 09 439 3330
KAIPARA DISTRICT COUNCIL Helpline 0800 727 059
 Mangawhai Office..... 0800 100 388
LINKING HANDS Health Shuttle Service, Maungaturoto 09 431 8969
LIONS CLUB PAPAROA Secretary Alistair Banks 09 431 6373
MAUNGATUROTO CHIROPRACTIC..... 09 431 8019
MAUNGATUROTO PHARMACY..... 09 431 8045
MAUNGATUROTO REST HOME 09 431 8696

OTAMATEA COMMUNITY SERVICES Community House 09 431 9080
PAPAROA LIBRARY Membership free-of-charge, Wheelchair access
 Mon 1.30-4.30pm, Wed 10am-12noon, Thu 1.30-4.30pm, Fri
 9.30am-1pm. Open Market days - alternate Saturdays 9.30-1pm
PAPAROA PLAYCENTRE Vanessa 09 431 6731, Renee 09 431 6336
PAPAROA PLUNKET Cynthia Keay..... 09 431 8187
 PLUNKET Helpline 0800 933 922
PAPAROA PRIMARY SCHOOL 09 431 7379
PARENT PORT Inc. free help for families Linda 09 425 9357
PHYSIOTHERAPY Lyndsay Bargh Mon/Wed/Fri from 8am...431 8576
PODIATRIST / FOOTCARE Jayne Short 020 4022 65998 / 09 431 7188
PUKE ARANGA TE KOHANGA REO 09 431 7089
YOUTH & WHANAU FOCUS South Kaipara, Rose 09 431 7418

PLUMBER

Kaiwaka to Ruawai

- 30 years' experience
- All plumbing services including new housing and maintenance



ANDREW KENNY
ph 027 642 8320

Support for Local Family



Stevie-Ray Rawaho-Ball (left) and sister Cheyanne Ball (right) pictured here with Mystics player Kayla Cullen.

At the instigation of local Mystics netballer Jessica Moulds, the Ball family who had suffered the loss of all their possessions in a recent Paparoa house fire, were hosted by the Mystics netball team.

When they heard of this little netballer who had lost her most treasured Mystics tee-shirt they invited Stevie-Ray to act as ball carrier and put on a great fuss for her! It was Stevie-Ray's 6th birthday and The Mystics presented her with some special treats.

Barfoot & Thompson's Peter Thompson presented mum Tina Ball with \$2,000 for the Netball Club and also a generous donation of \$3,000 for the family to help them get back on their feet following the disastrous house fire.

QUILTERS' CHALLENGE

Each year the Otamatea Quilters have a *Quilt Challenge*. This year the Challenge was to make an A3 size *Illuminated Letter* piece. Members are given one year to complete the Challenge. The formula is to take the first letter of yours, or someone else's, name and 'illuminate' it any way you wish. Applique and embellish your letter using any method, eg: beading, buttons, embroidery or any other form of surface decoration.



The piece needs to have 3 layers: top, batting and backing. It needs a border, and must measure 12" wide x 14" deep. For inspiration look in very old books, family bibles or calligraphy books, or the internet.

Fourteen members took up the Challenge and produced some very colourful pieces - to be displayed at our *Quilt Exhibition* at The Kauri Museum 22 Oct- 17 Nov 2014. For more info ph Lyn 439 2262.

"No job too small"

Ross Latto

**LICENSED
BUILDER**

House construction, alterations,
renovations, general repairs

Ph 09 431 7442 021 772 766

PO Box 17, Paparoa



Birt & Currie Surveyors Ltd



Local Phone
09 280-9591

**Timely,
friendly &
personal
service**

info@landsurveyors.co.nz
www.landsurveyors.co.nz

PO Box 120 Paparoa 0543

**PAPAROA
FARMERS MARKET**
LOCAL GOODS DIRECT
FROM THE PRODUCER



Fortnightly **SATURDAYS**
9am-noon at the Village Green

June 14th 28th
July 12th 26th

ph Mary 431 7123 or Graham 431 7209

A1 Cats Boarding Cattery

Ken & Faye
Subritzky

548 Pahi Rd



Ph 09 431 7477

www.a1cats.co.nz

Lance Keay Contracting Ltd

- Effluent Pond Cleaning
- Single Pass Tillage & Seeding
- Cultivation
- Fertiliser Spreading
- Hay & Silage Mowing
- 6 Ton Trailer

Taipuha RD1, Paparoa, 0571
09 431 6308 021 383 908
lance.k@extra.co.nz

5 Questions for ... Betty Cairns

How long have you been in Paparoa? *Nine years*

Where did you come from? *We had been in living in motor camps in Queensland while we worked on fruit orchards and wanted something that kept my husband Ken busy but did not involve contact with machinery as he is allergic to diesel.*

Why did you choose Paparoa as a place to live? *We were visiting friends in Pahi and they said there was a motor camp for sale. It seemed perfect and we prefer to live in smaller towns. The camp appealed to us as we are do-it-yourself types.*

What were you doing before you came to Paparoa? *We came originally from Katikati where Ken was an engineer at a quarry. We then lived in Niue for 5 years where Ken managed the heavy machinery maintenance at the Government Works Depot. We then took a break from machinery spending 5 years picking fruit and working in a vegetable processing plant in Bundaberg.*

What are you doing now? *The Paparoa Motor Camp is a seven day business and we have expanded it a lot over the last 9 years. I like meeting the varied people that pass through Paparoa. I am busy with PPI, WAG, Paparoa Press and I enjoy patchwork quilting. Our grandson lives with us as his parents are in Japan so I assist at his school.*

